



# ReachMaster Falcon FS95



When you need considerable work height combined with limited or narrow access and maybe even surface pressure restrictions, *nothing* outperforms the **new** Falcon series from REACHMASTER. In a field dominated by traditional boom lifts, the Falcon series sets a new standard for compact, flexible and light aerial work platform design. Now available in 9 models from 85 - 138 ft, the **Falcon FS95** is the original lift in the series, reaching a stunning 95 ft work height and still capable of passing through a door opening a mere 2.6 feet wide and 6.5 feet high.

Once again positioning itself as the technological market leader, the Falcon FS series is the first and only compact lift to be equipped with a new **double** 20 ft jib (2 x 10 ft) and optional automatic setting of outriggers. The lift can be driven in folded position from the basket as well as outriggers can be set automatically from the basket.

The new design is not only elegant, but also makes it the most user-friendly and safe unit in its class. Standard features include our world-renowned, automatic safety system and stability system, which provides maximum safety as well as our unique multi-position outrigger system, which allows for set-up on uneven surfaces.



**Steadman**  
**LiftSystems** LLC

Tel: 913.244.5699  
info@steadmanlifts.com  
www.steadmanlifts.com



# ReachMaster Falcon FS95

## Technical Data

### Standard equipment

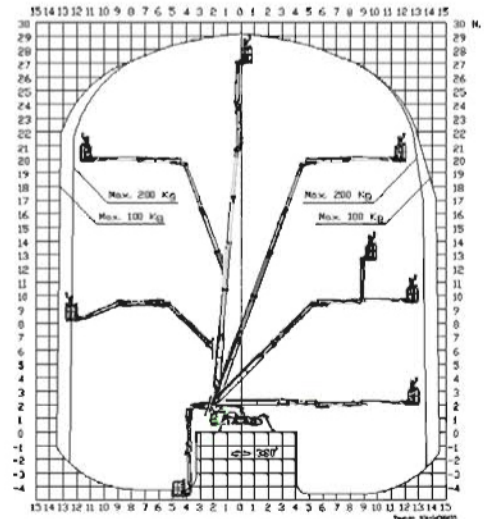
Working height:	95ft
Basket height:	89ft
Turret rotation:	375°
Double jib arm:	2x180°
Jib arm (2x10ft):	20ft
Basket (alu.):	(2.6ft x 4.2ft)
Basket load:	440lbs
Rotating basket (opt)	2x90°

### Measurements (Transport position):

Total height:	6.5ft
Total length:	20.7ft
Total width:	2.6ft
Gradability (std drive):	5°/10%*
Weight approx.	8,268lbs*

\* Depending on optional equipment.

## Reach Diagram



## Standard Performance and Features

- Access through 2.6ft wide x 6.5ft high door openings.
- Working height up to 95ft.
- 110V chargeable battery power system.
- Self-propelled electro hydraulic drive system, operational from pedestrian handle.
- Full hydraulic, double jib arm system with individual movements.
- 375° turret rotation, with integrated stop.
- Individual setting of outriggers controlled by hydraulic valve.
- The hydraulic/manual outriggers can be leveled on a slope of 8.5°.
- Due to its unique outrigger design, the ReachMaster Falcon can self-load onto trucks or trailers.
- 200° double jib arm (20ft.)
- Proportional control of all functions via joysticks, operated from inside the basket.
- Automatic safety and stability system.
- Electronic checking of the power system.
- Manual pump system for lowering the basket in case of emergency.
- Two person basket

## Optional Equipment

- Electrical automatic outrigger setting up of the ReachMaster Falcon from basket.
- Chassis steering from inside basket.
- Petrol (low noise) generator (3.0kW), enables you to work without a 110V main power supply.
- 2x90° hydraulic rotating basket.
- 2-wheel drive system (Gradability up to 10°/18%).
- 3-wheel drive system (Gradability up to 15°/26%)(min. width 3 ft).
- 360° continuous turret rotation.
- Outriggers with knee joint.
- 110V power supply in the basket.
- Diesel-powered system for both lift and chassis movements.
- Special color according to customer request.
- Twin wheel for low ground pressure allows driving on sensitive floorings such as marble.
- White non-marking tires.

The information and data in this brochure is not considered binding without express confirmation by ReachMaster, Inc. and subject to change without notice.